



## Affordable Reliable Service

Factory 11 no 17-23 Keppel Drive Hallam 3803, Victoria

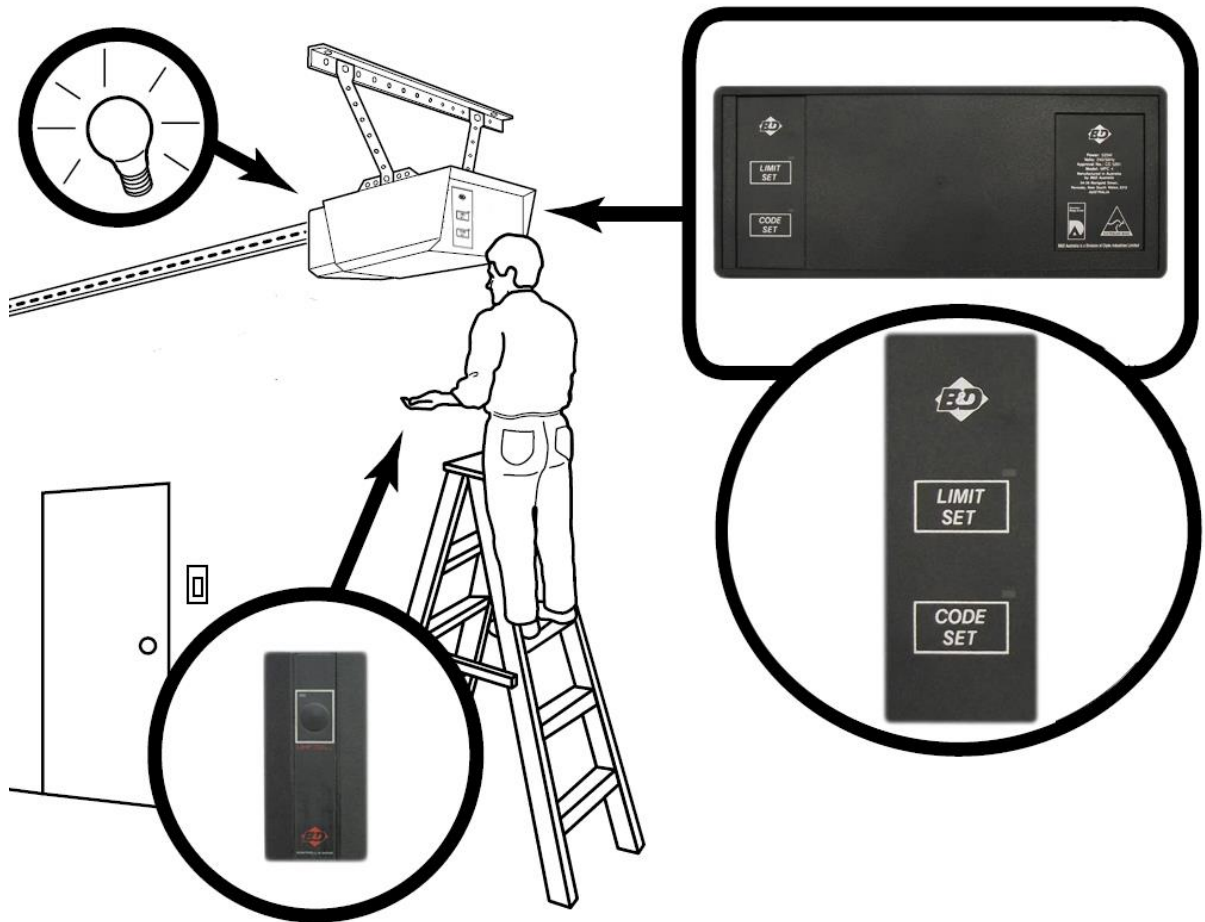
Ph. +61 3 9799 1999

Fax. +61 3 8786 3005

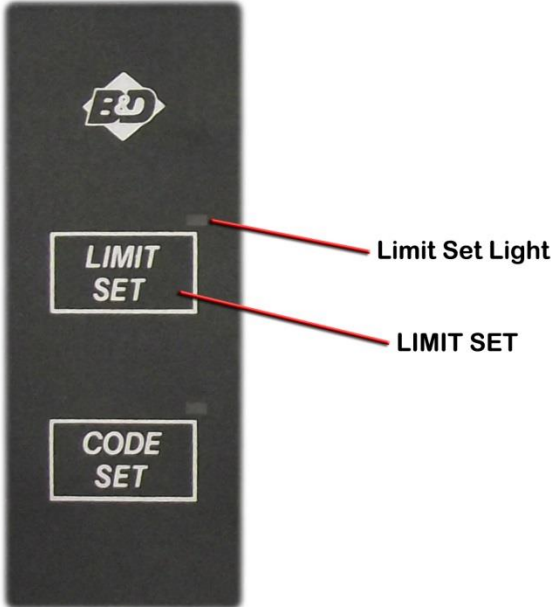
[warehouse@aggdoors.com.au](mailto:warehouse@aggdoors.com.au)

### Coding MPC-4 Transmitters

1. In order to configure your B&D MPC-4 Overhead Opener you will need to have access the buttons at the back of the unit – See below for instructions.



2. Setting your doors travel limits - This is usually required before you can code in the Transmitters – See below for instructions.

	<p style="text-align: center;"><b><u>MPC-4</u></b></p> <ol style="list-style-type: none"><li>1. Place the shuttle release lever in the vertical position (shuttle disengaged) and move the door to the fully closed position.</li><li>2. Move the release lever to the horizontal position (engaged position).</li><li>3. Plug the power cord into a correctly earthed power point.</li><li>4. Switch on power at the power point. The courtesy light should come on indicating all controls are active.</li><li>5. 'LIMIT SET' light should be on indicating the unit is in Limit Set Mode. If not, press the 'LIMIT SET' button once to enter Limit Set Mode.</li><li>6. Press and hold down the wall push button to drive the adjuster rod until it is fully inserted into the shuttle and engaged with the shuttle's locking mechanism.</li><li>7. Press the 'LIMIT SET' button on the Power-head to accept the lower limit. The 'LIMIT SET' light will now be flashing, indicating the lower limit has been accepted and the unit is now ready to set the upper limit.</li><li>8. Press and hold down the wall push button to drive the door up to the desired upper limit.</li><li>9. Press the 'LIMIT SET' button on Power-head to accept the upper limit. The 'LIMIT SET' light will extinguish, indicating limits have been accepted.</li></ol> <p><i>NOTE: After setting the limits, the door may initially not close completely as the garage door requires at least 3 cycles to learn the closing characteristics of the door.</i></p>
--	--

3. Setting or changing the code for your Transmitters – See below for instructions.



**MPC-4**

1. Set Transmitter slide switch to desired position - There are three positions Up, Middle & Down for coding more than one door. (See below)
2. Set Transmitter switch combination in any +, 0 or - position. (See below)
4. Press the 'CODE SET' button on the Power-head. The 'CODE SET' light will come on indicating that the unit is in Code Set Mode.
5. Press the Transmitter button for one second. Ensure that the Transmitter is at a distance of at least 1 Metre from the Power-head. The 'CODE SET' light will extinguish and the courtesy light will illuminate for about 10 seconds when the code is accepted.
6. Be sure that there are no obstructions or persons in the path of the garage door. Press the Transmitter to verify the system operation.

*NOTE: When setting the code for a second or third garage door simple move the slide switch to a different position and follow the same procedure.*

*NOTE: To activate either garage door move the slide switch to the corresponding position.*



7. Purchasing compatible remotes – See below for instructions.

Compatible Type 1



Compatible Type 2



➤ **METHOD 1** (Programmed from EXISTING remote(s) - These remotes are programmed using the same SWITCH combination of your existing remote(s).

*\*NOTE - For existing MPC-4 remotes the position of the SLIDE switch will also need to be programmed.*

➤ **METHOD 2** (Programmed with a RANDOM switch combination) – These remotes are programmed using a random SWITCH combination that can then be SET (coded in) using the previous procedure.

*\*NOTE – This option is for customers who have lost or no longer have existing remotes*

Below is a sample of a small card that will accompany your randomly coded remote – You will need to keep these for future reference and purchases.

MPC4 CODE - Switch Position					
+	1			5	
0	2	4	6	8	
		3			7
Side Switch	DOWN				

1. For both EXISTING and COMPATIBLE remotes – Simply press the transmitter for at least half a second to operate.